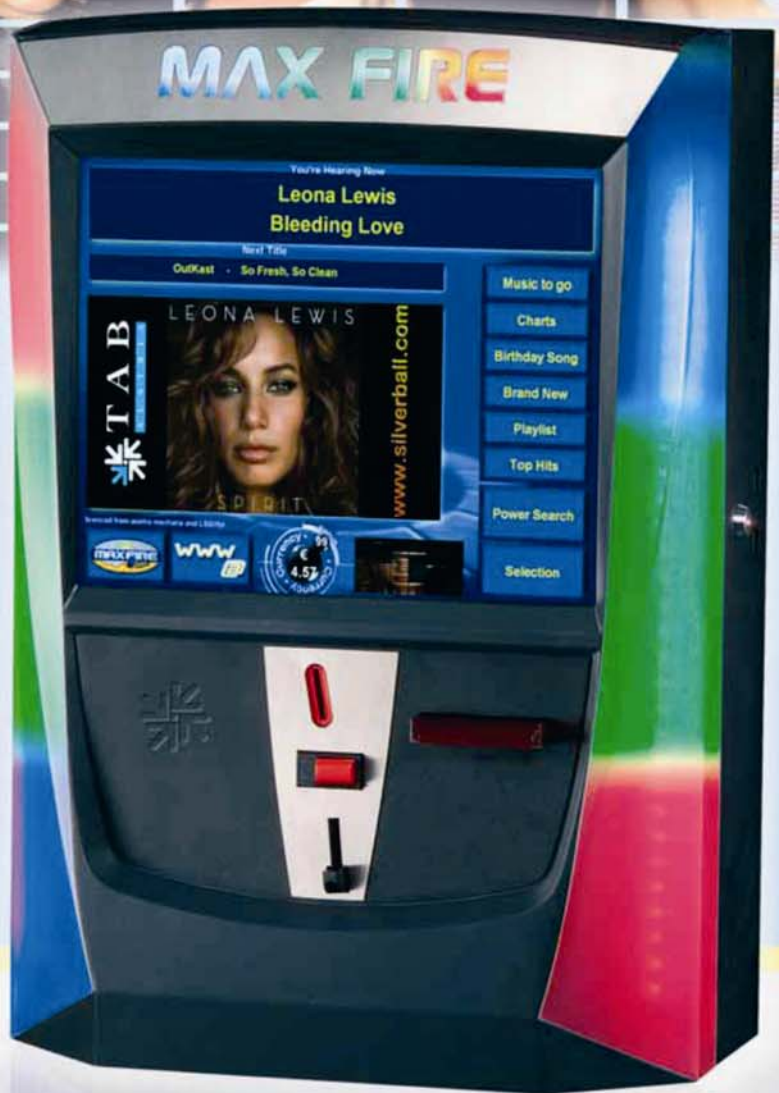


■ MAX FIRE Jukebox

SET UP



2
years warranty



→ Better games through innovation!



"LEONA LEWIS - SPIRIT" NOW IN YOUR MUSICSTORE AND AS DOWNLOAD AVAILABLE
(c) Sony BMG Music Entertainment (UK) Limited





We thank you for choosing

MAX FIRE Jukebox

We recommend you, for a satisfactory use of your MAX FIRE Jukebox Jukebox, that you read the manual exactly.

We wish you much success and much joy with your MAX FIRE Jukebox Jukebox.

Please store this manual in such a way as to make it readily at hand if so required.

For additional queries, our Hotline is at your service.

Call +43 / 72 29 / 78 0 40 – 250

Your MAX FIRE Jukebox Jukebox Team TAB - Austria

Technical Info MAX FIRE Jukebox Jukebox Setup.

You find the MAX FIRE Jukebox manual on:

www.tab.at/downloadbereich/download.html

(BG - 15.09.2008)

The text passages and illustrations contained within this document were put together with the greatest amount of care and attention, however, mistakes cannot be completely ruled out.

The manufacturer accepts no legal responsibility or liability in any form with regard to errors in detail, and any consequences that may arise from such errors.

The manufacturer is thankful for any suggestions for improvement or pointers leading to errors.

All rights – including any arising from photomechanical reproduction and storage in electronic or any other medium – are reserved. The program, handbook, and all components are subject to international copyright regulations.

4052 Ansfelden, Haiderstraße 40, Austria
Tel. +43 / 72 29 / 78 0 40 - 0*, Fax +43 / 72 29 / 78 6 60

All rights reserved.





Index

INDEX	4
TERMINAL / NOTES	5
DESCRIPTION	6
SETUP MACHINE	7
SETUP SOFTWARE	8
TESTMODE	9
CHAMPIONSNET	10
ONLINE TERMINAL MANAGEMENT	14
ACTIVATE ONLINE SERVICE	16
ACTIVATE MUSIC DOWNLOAD	17
ACTIVATE CHARTS	18

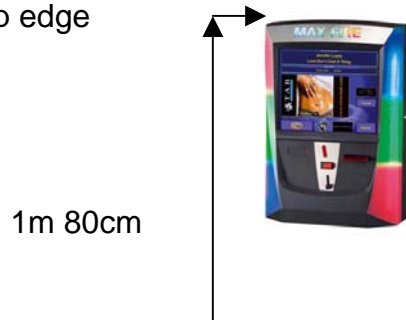




Terminal / Notes

Safety regulations for the user

- The machine may only be operated in dry rooms and connected to a safety plug socket that complies with the relevant safety standards.
- Before starting the machine, it should be allowed to attain room temperature.
- We recommend, that the machine will be installed in a height of 1 meter and 80 centimeter at top edge



- Check the main voltage before connecting the machine!
- The machine is designed for an alternating voltage of 230 Volt (or 115 Volt if specified on the type plate), 50 Hz and 120 W power.
- The machine may only be operated with a 3,15 amp fuse.
- In case of breakage to housing parts, protruding wires, machine fires or smashed picture tubes the machine must be immediately switched off and the main plug disconnected.
- Defective or bare wire cables, especially power cables and plug connectors must be replaced.

IMPORTANT!

In such cases ensure that any machine contact is avoided and that it cannot be switched on!

- The recommended ambient temperature is 5 – 35 Degrees on the Celsius scale.
- When positioned alongside other machines, interference in normal operation may occur.

Please pay attention to the licensing terms and conditions of Microsoft.





Disposal of Old Electrical & Electronic Equipment (Applicable in the European Union and other European countries with separate collection systems)

This symbol on the product or on its packaging indicates that this product shall not be treated as household waste. Instead it shall be handed over to the applicable collection point for the recycling of electrical and electronic equipment. By ensuring this product is disposed of correctly, you will help prevent potential negative consequences for the environment and human health, which could otherwise be caused by inappropriate waste handling of this product. The recycling of materials will help to conserve natural resources. For more detailed information about recycling of this product, please contact your local city office, your household waste disposal service or the company where you purchased the product.

Description

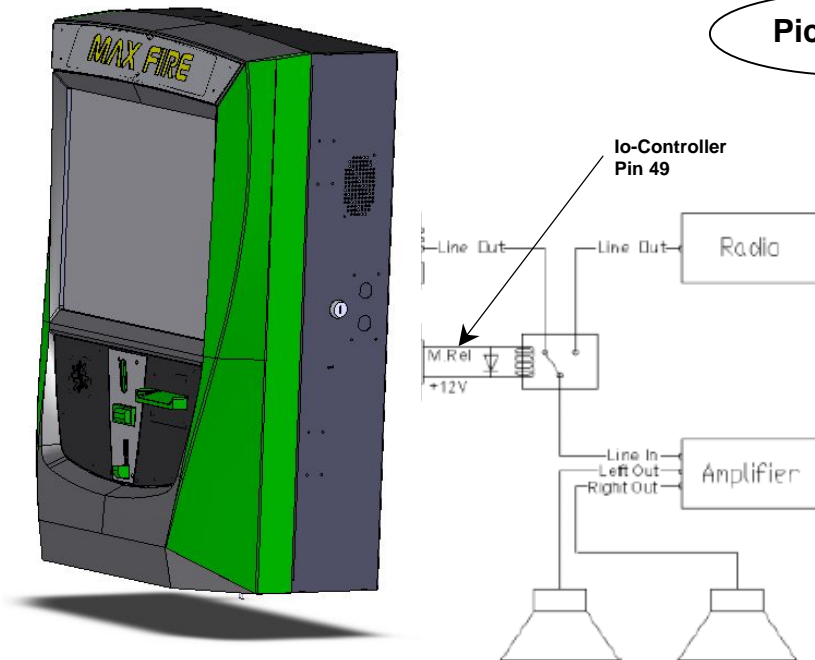
The *MAX FIRE Jukebox* is modern styled music jukebox made of coated steel and deep-drawn plastikparts..

In the machine there is an electronical coin-acceptor, CC Talk, a 17" TFT display plus touch – screen and a complete PC system.



Setup machine

- Unpacking the machine
- **Montage** (2 possibilities):
 - Wand - cross TAB
 - Wand - cross NSM
- Connect to power 230 V / 50 Hz (power socket)
- **Connect of sound**
Optional:
 - Connect speakers to external TAB amplifier (optional)
 - Connect to amplifier (Line – IN)
 - Other source per example a CD-player, on Line – IN and Line – OUT on amplifier (for background music → see point **Mpeg (video) data in manual** by setup)
 - Relais-control (switching rifle) of the CD-player and MAX Fire Jukebox on amplifier (controlled via I/O controller and also for background-music)
 See **picture 1.0**. How you can activate the relaise-control, you will find in the **main manual testmode** exactly described.



Picture 1.0



Setup software

Every machine was tested in factory and delivered in a preset condition.

We recommend you wait for 15 minutes, so that the display can attain optimum operating temperature.

Due to the effects of differences in temperature, it is possible that the display and touch-screen settings are incorrect. Therefore, we recommend the following procedure **always** be adhered to when commissioning for the first time see internet page:

www.tab.at/downloadbereich/download.html - see MAX FIRE Jukebox manual page 13

- Switch machine ON (switch is positioned at the backside)
- After starting choose here your preferred language for the *MAX FIRE Jukebox*



Testmode

- Switch the testmode inside of the machine ON



You are now entering the testmode:

MaxFire Video Testmode

MV/A - 1 m (1.30 - System Version 320) (Serial number: 19000091)
Th, 23. February 2006, 09:59 Clock

General	Basic settings
Machine tests	Hardware settings
Bookkeeping	Game price settings
Advertising text - input	PIN setting
ChampionsNet	Music
Online Service	





Championsnet

In the menu Championsnet you can set up the internet settings and register the MAX FIRE Jukebox by TAB – Austria.

Machine/Set-up site		
Machine number	31563	
Name of the establishment	LuckyMax2	
Place/Town	4052	
Address	Adress	
Telephone number	Telefon	
Fax number	Fax	
Email	Email	
Country	Austria	
<input type="button" value="change"/>		
Connection (Network - Direct)		
Telephone number		
User name		
Time	14:30	
<input type="button" value="change"/>		
<input type="button" value="Test connection"/>	<input type="button" value="Protocol"/>	ChampionsNet <input checked="" type="checkbox"/> activate <input type="button" value="Help"/> <input type="button" value="Back"/>
<input type="button" value="Register ..."/>	<input type="button" value="Email"/>	
<input type="button" value="Receive datas"/>	<input type="button" value="WWW"/>	
<input type="button" value="Receive all datas"/>		

- Activate ChampionsNet

Please note: The terminal will restart automatically after activating.





Choose „change“ at the „Connection“ and you will come to this menu:

- **Provider connection:**
 - Setup the telephone number, user name and password for your connection.
- **Start of transmission**
 - Set the time of the automatically daily-transfer of the Championsnet datas.

The screenshot shows a web-based configuration interface. At the top, there is a section titled "Provider connection" with four input fields: "Telephone number", "User name", "Password", and "Confirmation". Each field has a "change" button to its right. Below this is a section titled "Start of transmission" with two radio buttons: "Hour" (selected) and "Minute". The "Hour" field contains the value "14" and the "Minute" field contains "30". To the right of these fields are two buttons: "+" and "--". To the right of the "Start of transmission" section is a section titled "Connection Type" with four radio buttons: "Modem", "Network - Direct" (selected), "Network - VPN", and "Network - PPPOE". Below these is a checkbox labeled "Permanent Connection" which is currently unchecked. At the bottom right of the form are two buttons: "Page 2..." and "Back".

- **Connection Type**

Choose your internet connection. If you choose "Permanent connection", the machine is always connected to the internet. This is not recommended, because then you can have high internet costs.



- Network Direct (intern network)

There is your device in a intern network. You don't need any datas like telephone number or password. You need only the settings on **page 2**.

Choose the connection **Network Direct** and click the button **Page 2** (see **picture 1.0**). For this datas, please connect your network admistrator and fill it in.

- Network – VPN

Users of ADSL have to choose this option. You get your internet setup datas from your provider like number, username and password. Choose the connection **Network – VPN** and fill in the datas. Then go on **page 2 (picture 1.0)** and there you make the following settings:

- De-activate **Disable DNS**
- Fill in DNS 1
- Fill in DNS 2
- De-activate **Use DHCP**
- Fill in IP-adress
- Fill in Subnet Mask

All this datas you get from your internet provider.

- Network – PPPOE (tie internet)

Users of TDSL or higher are using this option! You get your internet setup datas from your provider like number, username and password. Choose the connection **Network – PPPOE** and fill in the datas. Then go on **page 2 (picture 1.0)** and there you make the following settings:

- Activate **Disable DNS**
- De-activate **Use DHCP**
- Fill in IP-adress
- Fill in Subnet Mask

All this datas you get from your internet provider.

You are able to connect more machines together and then connect them into the internet. What you need for this is a **hardware router** which is establishing the internet connection for example via DSL. With the network card on-board you configure a local network (see settings **Network Direct**). The PCs will be connected to the router, and the router to the DSL connection.





Fill in here your internet settings. Please contact your internet provider or network administrator when you have problems.

- **Silverball Max Terminal**

When you have a *Silverball Max* in your network, and you want to operate it as a *Silverball Selection Terminal*, please activate **Enable Max Terminal** and fill in a IP-adress **outside** the IP area of **IP Pool Starting Address** and **IP Pool Ending Address**.

For Example: You have a router with starting address 100 and with ending address 199. You see your IP-adress, for example: 192.168.123.**199**

Then fill the IP-adress in the box **SB-MAX-IP** as follows: 192.168.123.**200**

The last number is outside of the area and will be recognized as a *Silverball Selection Terminal*. This address you fill in for all *Silverball Selection Terminals* in your network.





Online Terminal Management

With the ONLINE TERMINAL MANAGEMENT you are able to advise your machines from your home!

With Online Service you can update the version, send music titles on your MAX FIRE Jukebox, make the payroll and much more **at home**.

With the Online Terminal Management homepage a lot of functions can run with only a few mouseclicks:

- **Online Music Shop**
Choose music and video files or complete packages and send them to your terminals!
- **Online Service**
See important datas from your machines at every time.
- **Terminal and license management**
Here you can manage all your terminals and update your Version online (**Online Version Plus**)!

You can directly register at <https://service.championsnet.net> or www.tab.at/otm

If you register at your first time, you will get your licenses for the first 3 months for free, with the licenses you can activate Online Service. The prices for the download of the music and video files and more details of to OTM service you can find on www.tab.at in the **OTM** area.





When all settings are done, you have to **register** your machine into the ChampionsNet.

Machine/Set-up site		
Machine number	31563	
Name of the establishment	LuckyMax2	
Place/Town	4052	
Address	Adress	
Telephone number	Telefon	
Fax number	Fax	
Email	Email	
Country	Austria	
<input type="button" value="change"/>		
Connection (Network - Direct)		
Telephone number		
User name		
Time	14:30	
<input type="button" value="change"/>		
<input type="button" value="Test connection"/>	<input type="button" value="Protocol"/>	ChampionsNet <input checked="" type="checkbox"/> activate <input type="button" value="Help"/> <input type="button" value="Back"/>
<input type="button" value="Register ..."/>	<input type="button" value="Email"/>	
<input type="button" value="Receive datas"/>	<input type="button" value="WWW"/>	
<input type="button" value="Receive all datas"/>		

In the registration procedure, the machine is getting accounced to the ChampionsNet server and gets it owns machine number.

For the feature Online Service, you must register at our homepage under OTM and get your own Tan list and licenses. The licenses are free for 3 months.

Then in the **testmode** the button **Online Service** is available. Activate Online Service by clicking the button, agree the provisions and fill in a TAN – code.





Activate Online Service

MaxFire Video Testmode

MV/A - 1 m (1.30 - System Version 320) (Serial number: 19000091)

Th, 23. February 2006, 09:59 Clock

General	Basic settings
Machine tests	Hardware settings
Bookkeeping	Game price settings
Advertising text - input	PIN setting
ChampionsNet	Music
Online Service	

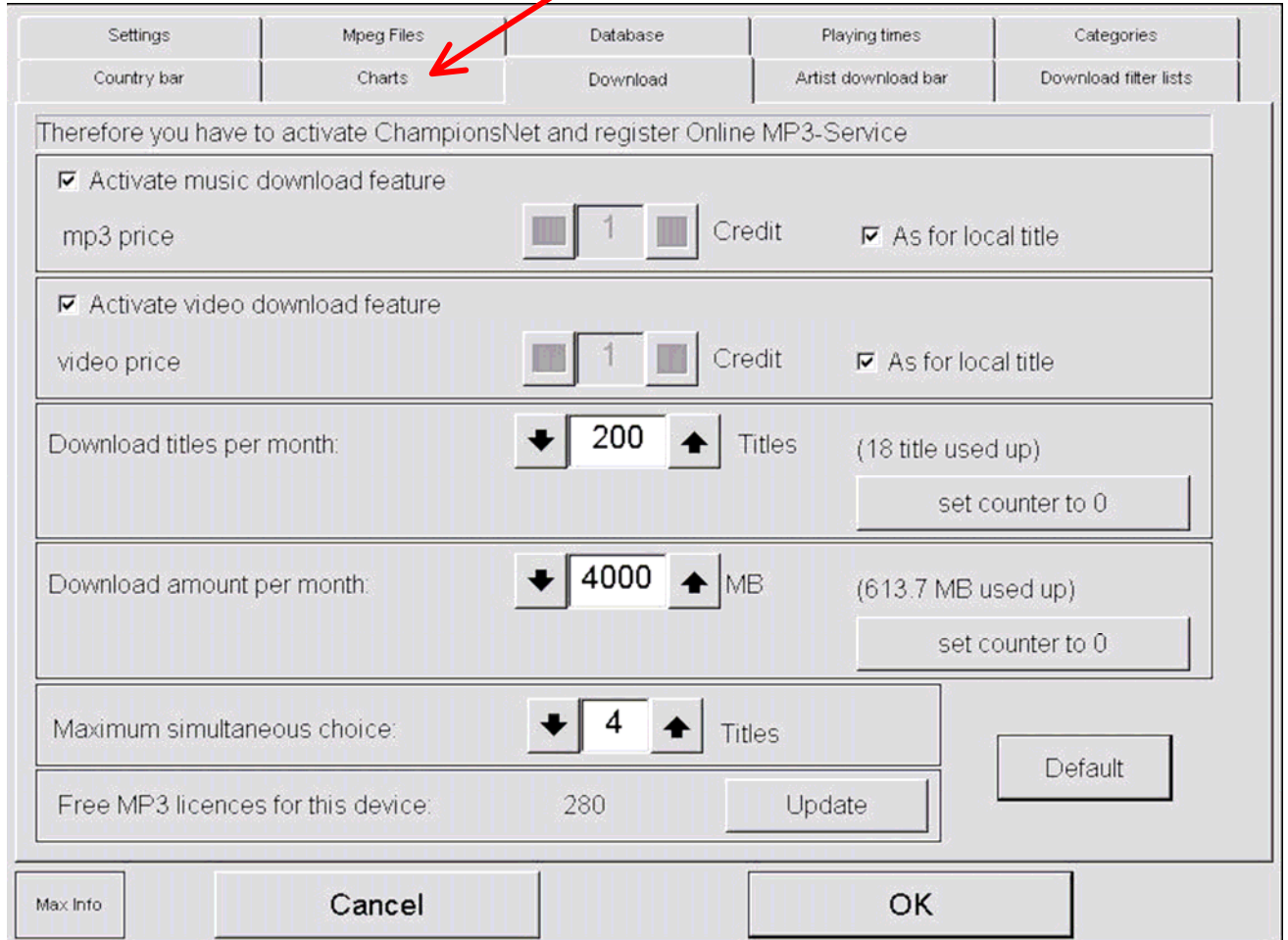
Choose „**Online Service**“.

Follow the instructions on the screen and fill in your **Tan code**, device number (**GE....**) and the current stand of your **counter**.



Activate Music Download

Please change into the folder „Music“.
Activate „music download“.



Settings	Mpeg Files	Database	Playing times	Categories
Country bar	Charts	Download	Artist download bar	Download filter lists

Therefore you have to activate ChampionsNet and register Online MP3-Service

Activate music download feature

mp3 price: Credit As for local title

Activate video download feature

video price: Credit As for local title

Download titles per month: Titles (18 title used up)

Download amount per month: MB (613.7 MB used up)

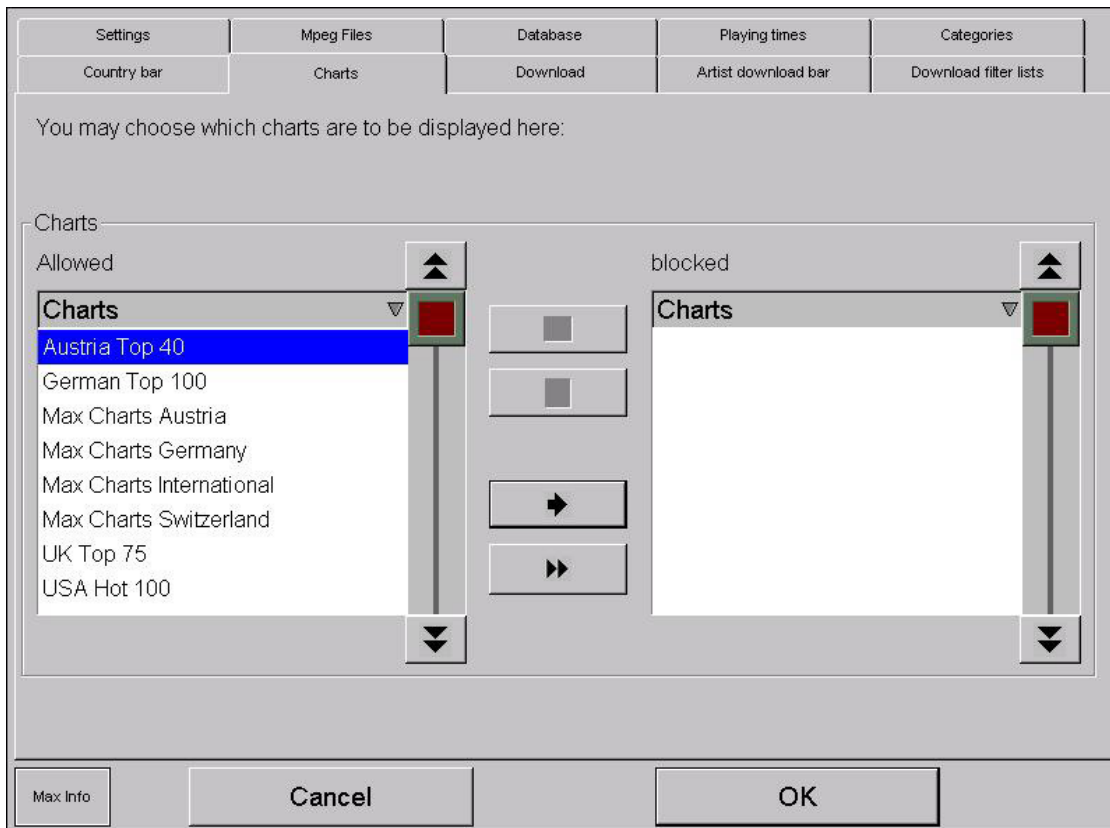
Maximum simultaneous choice: Titles

Free MP3 licences for this device: 280

This feature is only available if Championsnet is activated and a first registration is done. After you activate the feature, you will be asked if you want to make a data transfer.



Activate Charts



Here you can allow or block the shown chart lists. Each chart list are downloaded and will be serviced automatically from the TAB server.

The "**MAX**" charts are the top downloaded titles from the specified countries!

First installation of charts since version V1.52

If you have a machine which has software version below V1.52 you get after the update to a higher version automatically the country specified chart lists. Of course you can activate the other chart lists too!

Also the first both data transmissions to our server will take longer as normal in case of downloading and installing the complete chart lists. Also you have to make a complete data transmission (receive all data's) after changing the chart lists!

→Your MAX FIRE Jukebox Video is now completely configured! We wish you a lot of fun with this innovative product!

