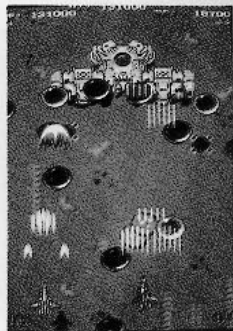
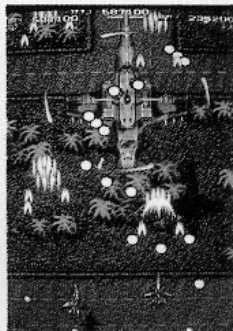
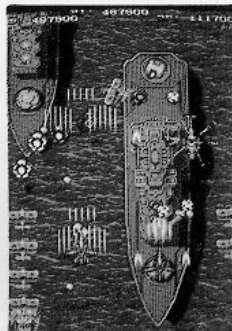


DOOYONG IND.CO.,LTD.



- VERTICAL SCROLL SHOOTING
- SEVEN ACTION-FILLED STAGE
- SPECIAL 4 LEVEL OF POWER-UPS
- TWO PLAYER SIMULTANEOUS ACTION
- BUY-IN AND CONTINUE FEATURES

BLUE HAWK

* DIP SW A *

SETTING	POSITION	1	2	3	4	5	6	7	8
TEST MODE	• NORMAL GAME	OFF							
	TEST MODE	ON							
COIN TYPE	* TYPE 1		OFF						
	TYPE 2		ON						
DEMO SOUND	• SOUND			OFF					
	NO SOUND			ON					
SCREEN	• NORMAL				OFF				
	INVERSION				ON				
	TYPE 1	TYPE 2							
PLAY PRICING	* 1 COIN 1 PLAY	1 COIN 1 PLAY				OFF	OFF		
	1 COIN 2 PLAY	2 COIN 1 PLAY				ON	OFF		
	2 COIN 1 PLAY	3 COIN 1 PLAY				OFF	ON		
	2 COIN 3 PLAY	4 COIN 1 PLAY				ON	ON		
COIN 2	* 1 COIN 1 PLAY	1 COIN 1 PLAY						OFF	OFF
	1 COIN 2 PLAY	1 COIN 3 PLAY						ON	OFF
	2 COIN 1 PLAY	1 COIN 4 PLAY						OFF	ON
	2 COIN 3 PLAY	1 COIN 6 PLAY						ON	ON

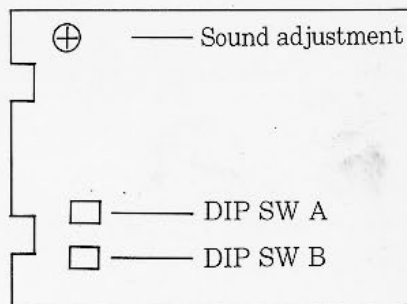
* DIP SW B *

SETTING	POSITION	1	2	3	4	5	6	7	8
NUMBER OF PLAYER	• 3	OFF	OFF						
	2	ON	OFF						
	4	OFF	ON						
	1	ON	ON						
GAME DIFFICULTY	* NORMAL			OFF	OFF				
	EASY			ON	OFF				
	HARD			OFF	ON				
	HARDEST			ON	ON				
CONTINUED PLAY	* WITH WITHOUT								OFF ON

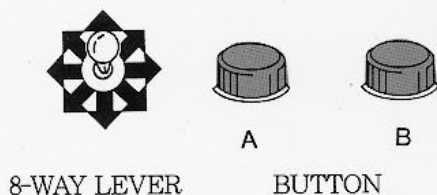
* SHOWS RECOMMENDED SETTINGS.

WIRING DIAGRAM

SOLDER SIDE			COMPONENT SIDE
GND	A	1	GND
GND	B	2	GND
+5V	C	3	+5V
+5V	D	4	+5V
-5V	E	5	-5V
+12V	F	6	+12V
	H	7	
COIN COUNTER 2	J	8	COIN COUNTER 1
	K	9	
SP(-)	L	10	SP(+)
	M	11	
VIDEO GREEN	N	12	VIDEO RED
VIDEO SYNC	P	13	VIDEO BLUE
SERVICE SW	R	14	VIDEO GND
	S	15	
COIN SW 2	T	16	COIN SW 1
START SW 2	U	17	START SW 1
2P UP	V	18	1P UP
2P DOWN	W	19	1P DOWN
2P LEFT	X	20	1P LEFT
2P RIGHT	Y	21	1P RIGHT
2P SHOOT 1	Z	22	1P SHOOT 1
2P SHOOT 2	a	23	1P SHOOT 2
	b	24	
	c	25	
	d	26	
GND	e	27	GND
GND	f	28	GND



CONTROL PANNEL



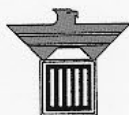
OPTION

GUN CHANGE

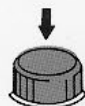
SPECIAL POWER



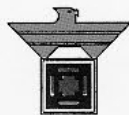
POWER UP



+



AUTOMATIC GUN



+



SPEED UP



+



BOMB



MISSILE



BONUS POINT



1UP BONUS





DOOYONG IND. CO., LTD.

ADD: 91-11, KARAK-DONG, SONGPA-GU,
SEOUL, KOREA
C.P.O. BOX 4493 SEOUL, KOREA
TEL: (02) 448-6831 ~ 5
FAX: (02) 406-8839