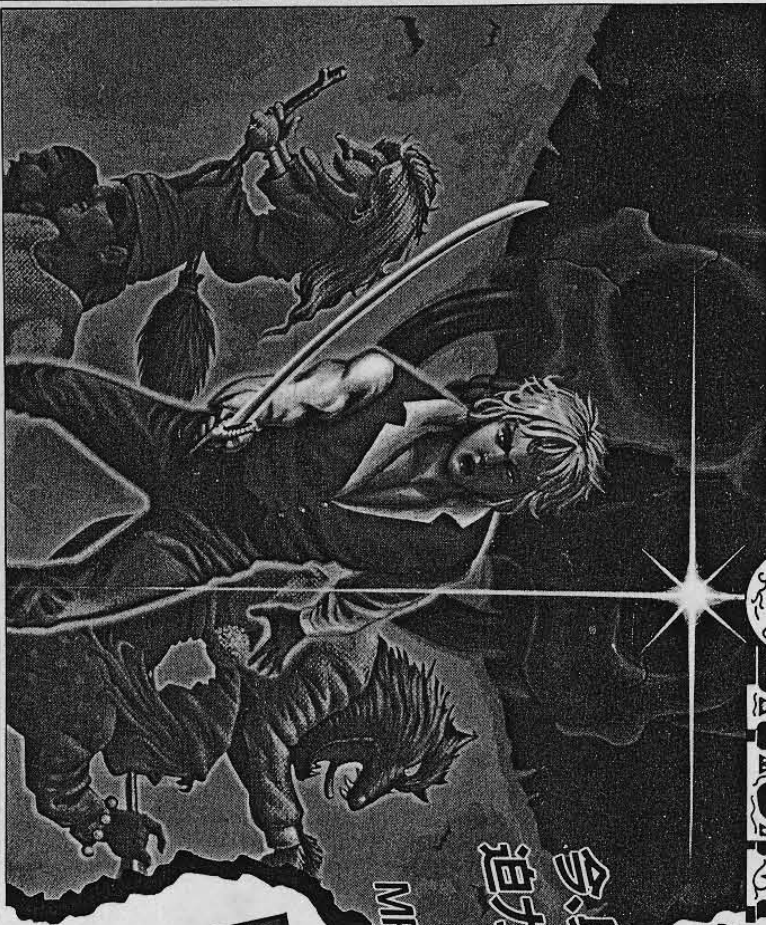
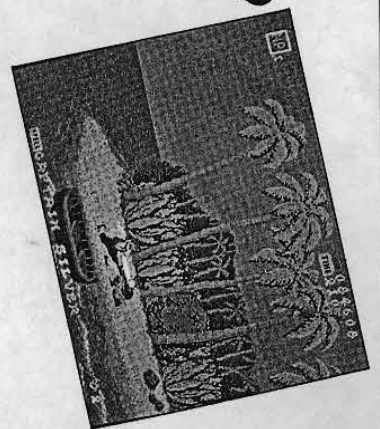


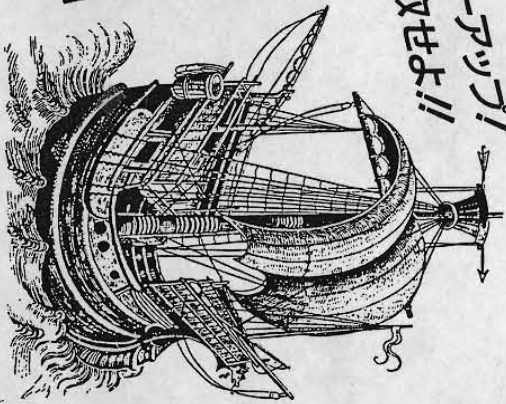
GRIMM CAPTAIN HERO

キャラクター・シルバーTM



今、興奮の嵐が吹き荒れる！
追分のスーパーリアル・アドベンチャー！！

孤島に眠る宝の謎！
MPを上げ、アイテムでパワーアップ！
敵を撃破し、財宝を奪取せよ！！



CAPTAIN SILVER

87/08/17

WIRING DIAGRAM

SOLDER SIDE		PARTS SIDE	
1	GND	1	GND
2	GND	2	GND
3	+5V	3	+5V
4	+5V	4	+5V
5	+12V	5	+12V
6	MISTAKEN INPUT PREVENTION	6	MISTAKEN INPUT PREVENTION
7		7	
8		8	
9		9	
10	SPEAKER(-)	10	SPEAKER(+)
11		11	
12	VIDEO GREEN	12	VIDEO RED
13	VIDEO SYNC	13	VIDEO BLUE
14	SERVICE SWITCH	14	VIDEO GND
15		15	
16	COIN SWITCH 2	16	COIN SWITCH 1
17	START SWITCH 2	17	START SWITCH 1
18	2P UP	18	1P UP
19	2P DOWN	19	1P DOWN
20	2P LEFT	20	1P LEFT
21	2P RIGHT	21	1P RIGHT
22	2P PUSH 1	22	1P PUSH 1
23	2P PUSH 2	23	1P PUSH 2
24		24	
25		25	
26		26	
27	GND	27	GND
28	GND	28	GND

DIP SW 1		DIP SW 2	
1	COIN/CREDIT	1	NUMBER OF LIVES
2	RIGHT SELECTOR	2	GAME DIFFICULTY
3	COIN/CREDIT LEFT SELECTOR	3	CONTINUE MODE
4		4	DON'T CHANGE
5		5	
6		6	
7		7	
8		8	

Setting	1	2	3	4	5	6	7	8
COIN/CREDIT	1COIN 1PLAY	OFF	OFF					
RIGHT SELECTOR	1COIN 2PLAY	ON	OFF					
COIN/CREDIT LEFT SELECTOR	1COIN 3PLAY	OFF	ON					
	2COIN 1PLAY	ON	ON					
	1COIN 1PLAY			OFF	OFF			
	1COIN 2PLAY			ON	OFF			
	1COIN 3PLAY			OFF	ON			
	2COIN 1PLAY			ON	ON			
DON'T CHANGE						OFF		
ATTRACT MODE SOUND	YES					OFF		
	NO					ON		
SCREEN ROTATION	NORMAL						OFF	
	REVERSE						ON	
CONTROL PANEL	TABLE							OFF
	UPRIGHT							ON

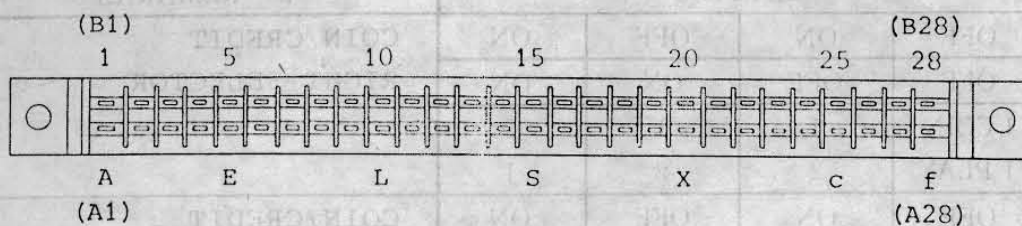
Setting	1	2	3	4	5	6	7	8
NUMBER OF LIVES	3	OFF	OFF					
	5	ON	OFF					
	1	OFF	ON					
	∞	ON	ON					
GAME DIFFICULTY	NORMAL			OFF	OFF			
	EASY			ON	OFF			
	HARD			OFF	ON			
	HARDEST			ON	ON			
CONTINUE MODE	YES					OFF		
	NO					ON		
DON'T CHANGE							OFF	OFF
							OFF	OFF

* CAPTAIN SILVER

2. ハーネスの接続 / HARNESS CONNECTION

2-1 端子No.のふり方 / TERMINAL NUMBERING

コネクター CR7E-56DA-3.96E (HRS) 3.96mm Pitch
 CONNECTOR 1168-056-009 (KEL) 3.96mm Pitch



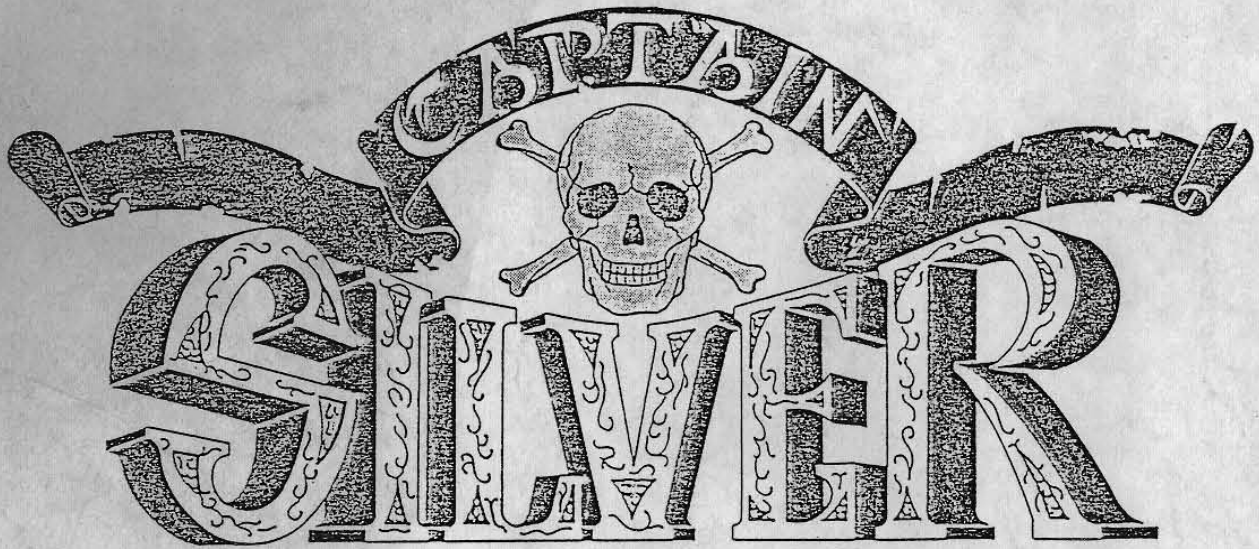
2-2 エッジコネクター端子の配列 / SIGNAL TO TERMINAL

半田面 SOLDER SIDE	端子番号 PIN #	部品面 PARTS SIDE
GND	A 1	GND
GND	B 2	GND
+5V	C 3	+5V
+5V	D 4	+5V
	E 5	
+12V	F 6	+12V
誤挿入防止キ- MISTAKEN INPUT PREVENTION	H 7	誤挿入防止キ- MISTAKEN INPUT PREVENTION
COIN COUNTER 2	J 8	COIN COUNTER 1
	K 9	
SPEAKER (-)	L 10	SPEAKER (+)
	M 11	
VIDEO GREEN	N 12	VIDEO RED
VIDEO SYNC	P 13	VIDEO BLUE
SERVICE SWITCH	R 14	VIDEO GND
	S 15	
COIN SWITCH 2	T 16	COIN SWITCH 1
START SWITCH 2	U 17	START SWITCH 1
2P CONTROL 1 UP	V 18	1P CONTROL 1 UP
2P CONTROL 2 DOWN	W 19	1P CONTROL 2 DOWN
2P CONTROL 3 LEFT	X 20	1P CONTROL 3 LEFT
2P CONTROL 4 RIGHT	Y 21	1P CONTROL 4 RIGHT
2P CONTROL 5 PUSH 1	Z 22	1P CONTROL 5 PUSH 1
2P CONTROL 6 PUSH 2	a 23	1P CONTROL 6 PUSH 2
	b 24	
	c 25	
	d 26	
GND	e 27	GND
GND	f 28	GND

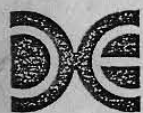
10. ディップスイッチの説明 / DIP SWITCH SETTING

DIP SWITCH 1					
No.	SETTING				REMARKS
1	OFF	ON	OFF	ON	COIN/CREDIT RIGHT SELECTOR
2	OFF	OFF	ON	ON	
	1 COIN 1 PLAY	1 2	1 3	2 1	
3	OFF	ON	OFF	ON	COIN/CREDIT LEFT SELECTOR
4	OFF	OFF	ON	ON	
	1 COIN 1 PLAY	1 2	1 3	2 1	
5	OFF				取扱禁止 DON'T CHANGE
6	OFF		ON		アイドル中サウンドの有無 ATTRACT MODE SOUND
	有	YES	無	NO	
7	OFF		ON		画面ローテーション SCREEN ROTATION
	通常	NORMAL	反転	REVERSE	
8	OFF		ON		コントロールパネル CONTROL PANEL
	テーブル	TABLE	アップライト	ラバータイプ UPRIGHT	

DIP SWITCH 2					
No.	SETTING				REMARKS
1	OFF	ON	OFF	ON	持ち数 NUMBER OF LIVES
2	OFF	OFF	ON	ON	
	3	5	1	~	
3	OFF	ON	OFF	ON	ゲーム難易度 GAME DIFFICULTY
4	OFF	OFF	ON	ON	
	通常	易	やや難	難	
	NORMAL	EASY	HARD	HARDEST	
5	OFF		ON		コンティニューの有無 CONTINUE MODE
	有	YES	無	NO	
6	OFF				取扱禁止 DON'T CHANGE
7	OFF				
8	OFF				



INSTRUCTIONS



DATA EAST CORPORATION

4-41-10, MINAMI-OGIKUBO, SUGINAMI-KU, TOKYO "167"
PHONE(03)331-5441 FAX(03)335-3741 TELEX2322124 "DATA J"



OPERATION (CLIMB UP)	
WALK LEFT (CLIMB UP) WALK LEFT (MOVE LEFT) BEND AND MOVE TO LEFT (CLIMB DOWN) BEND (CLIMB DOWN)	WALK RIGHT (CLIMB UP) WALK RIGHT (MOVE RIGHT) BEND AND MOVE TO RIGHT (CLIMB DOWN) IN () WHEN ON LADDER
	 ATTACK
	 JUMP
MAGICAL POWER (MP)	BONUS POINTS
Your sword becomes a magic SWORD when fairy is caught.	 COIN
	 DIAMOND
	 CROWN
POWER UP	INCANTATION
FIND OUT HIDDEN ITEMS SWORD - BIG SWORD BOOT - JUMP POWER-UP MEDICINE - BECOME INVINCIBLE WATCH - TIME STOPS KEY - SOMETHING WILL HAPPEN	
	Letters will appear when enemies are destroyed so collect them to complete 'CAPTAIN SILVER' for 1 UP



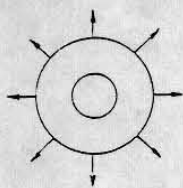
1. 設置の概要 / INSTALLATION

1-1 CRTモニター / CRT MONITOR

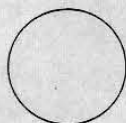
横画面 / HORIZONTAL SCREEN

1-2 コントロールパネルの配置 / CONTROL PANEL

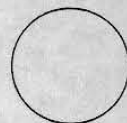
例 1



8方向レバー
8 WAY JOYSTICK



PUSH 1



PUSH 2

*1 JOYSTICK 方向選択レバー / DIRECTION OF SHOT

PUSH 1 攻撃ボタン / SHOOT BUTTON

PUSH 2 ジャンプボタン / JUMP BUTTON

3. 電源容量 / POWER SUPPLY

+5 V	±2%	5.0 A
+12 V	±2%	1.0 A

4. 使用条件 / OPERATION ENVIRONMENTS

	温度 TEMPERATURE	湿度 HUMIDITY
稼動時 OPERATION	5~35℃	20~80%
保存時 STORAGE	-15~65℃	10~90%

5. モニター / CRT MONITOR

5-1 色信号 R, G, B セパレート / COLOR SIGNALS R.G.B. SEPARATE

黒 / BLACK 0~+0.2 V

映像信号 / IMAGE SIGNAL +0.2 V~+4.5 V

5-2 同期信号 コンポジット / SYNCHRONIZE SIGNAL COMPOSITE

0 0~0.5 V

1 +3 V~+5 V

5-3 画面サイズ / SCREEN IMAGE SIZE

左右約10%画面サイズが縮みます。

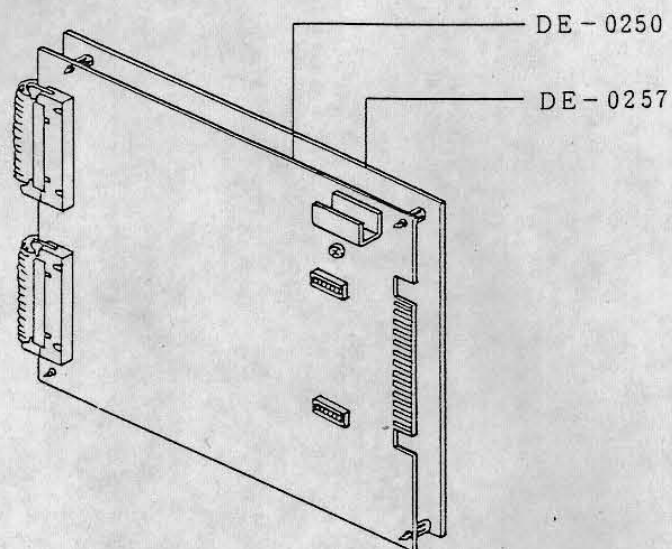
モニターを調整し、拡大して下さい。

Image may be shrunk horizontally by 10%.
Adjust monitor to widen the screen image.

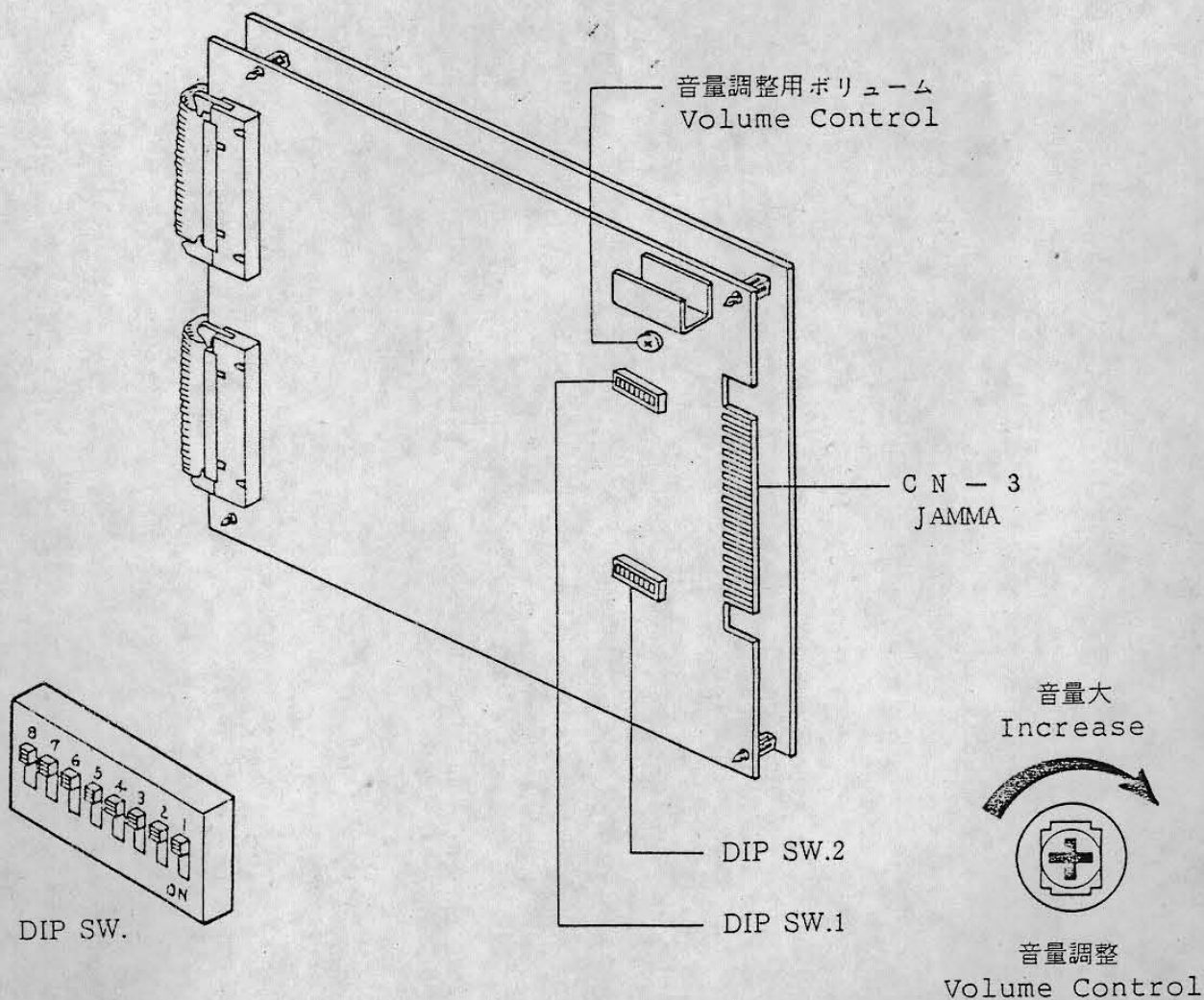
6. 外形 / DIMENSION

DE - 0250 → 280 mm × 380 mm

DE - 0257 → 280 mm × 380 mm

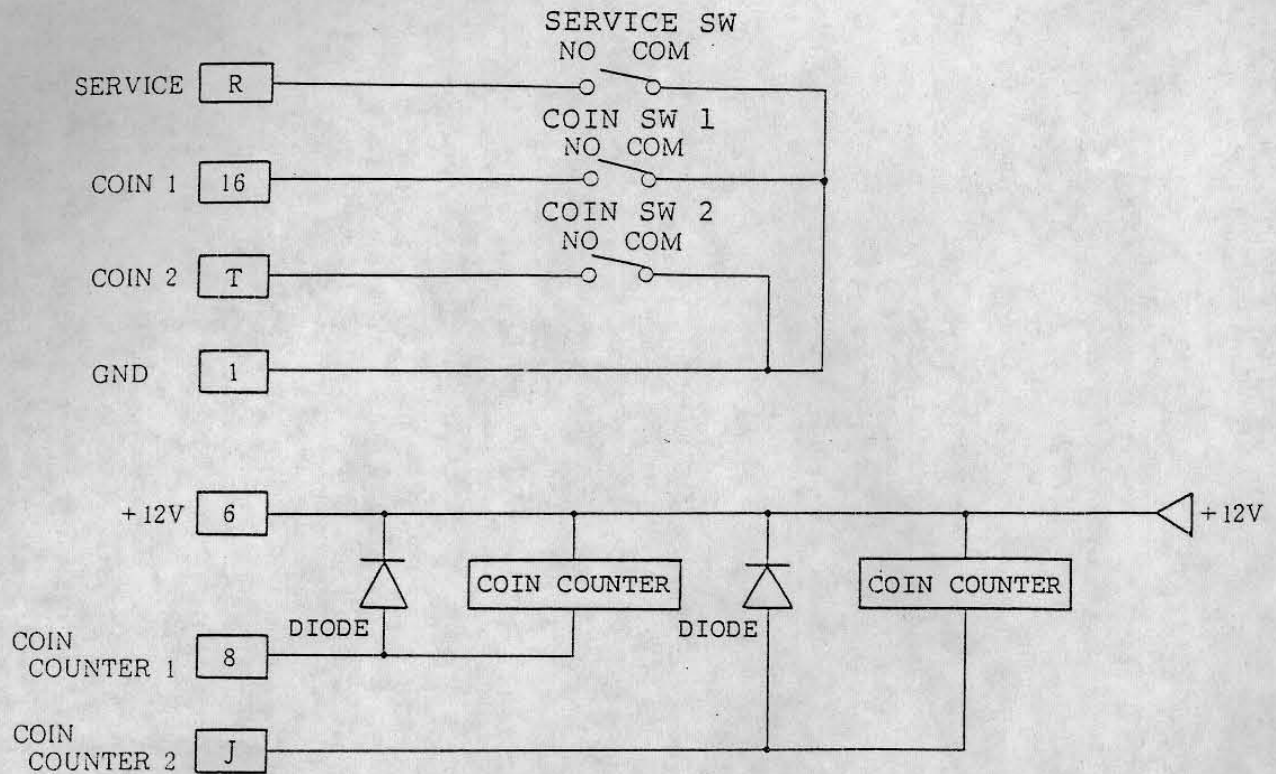


Connectors : 1168-056-009 (CN-3) (KEL)

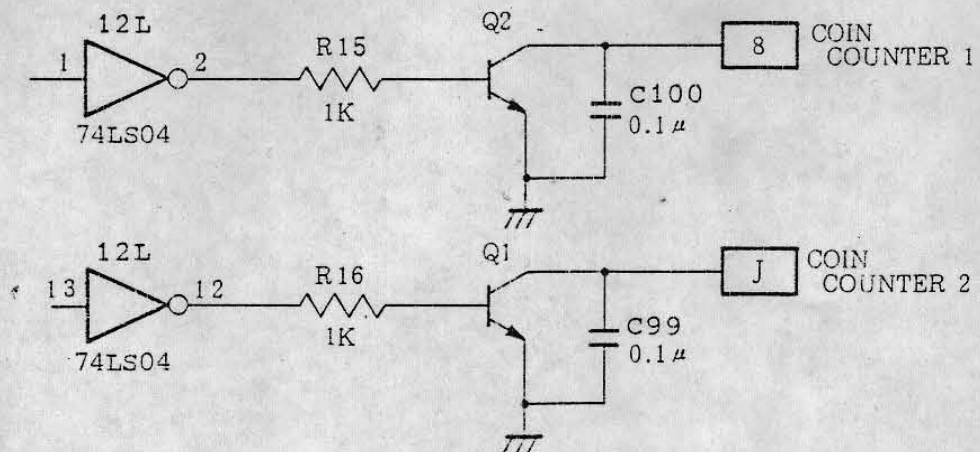


7. 標準接続例 / EXAMPLE OF STANDARD CONNECTION

7-1 コインスイッチの接続例 (2ヶ) / 2 COIN SWITCHES CAN BE INSTALLED



7-2 コインカウンタードライブ回路 / COIN COUNTER-DRIVE CIRCUIT



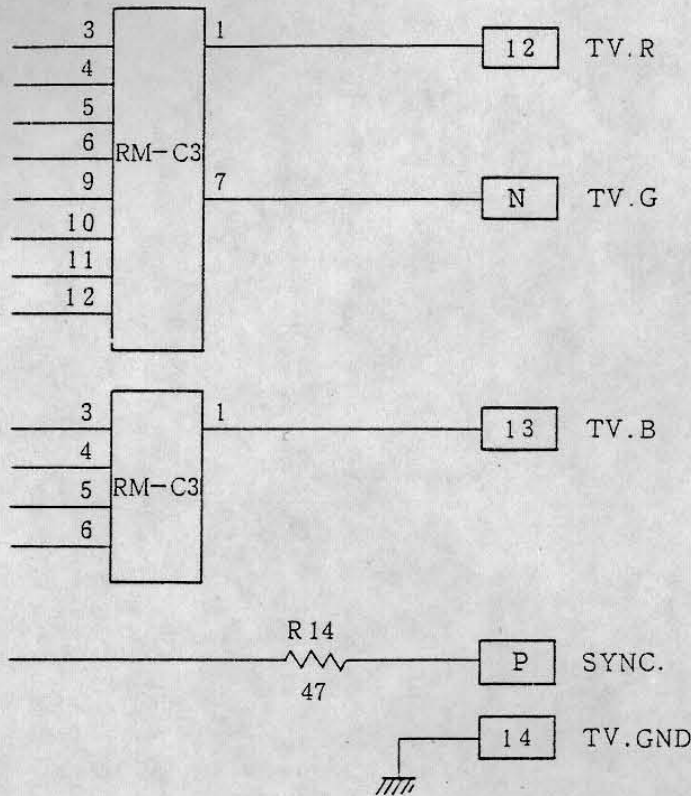
8. モニターとの接続 / MONITOR CONNECTION

モニターの各入力が+5V系のもので同期信号が水平、垂直混合（コンポジット）のものが接続できます。

各信号の出力回路は、次のようになっております。

Monitor input composite signals - Horis/Vert on +5V can be connected.

Circuit diagram of each signal shown below.



9. スピーカーの接続例 / SPEAKER

