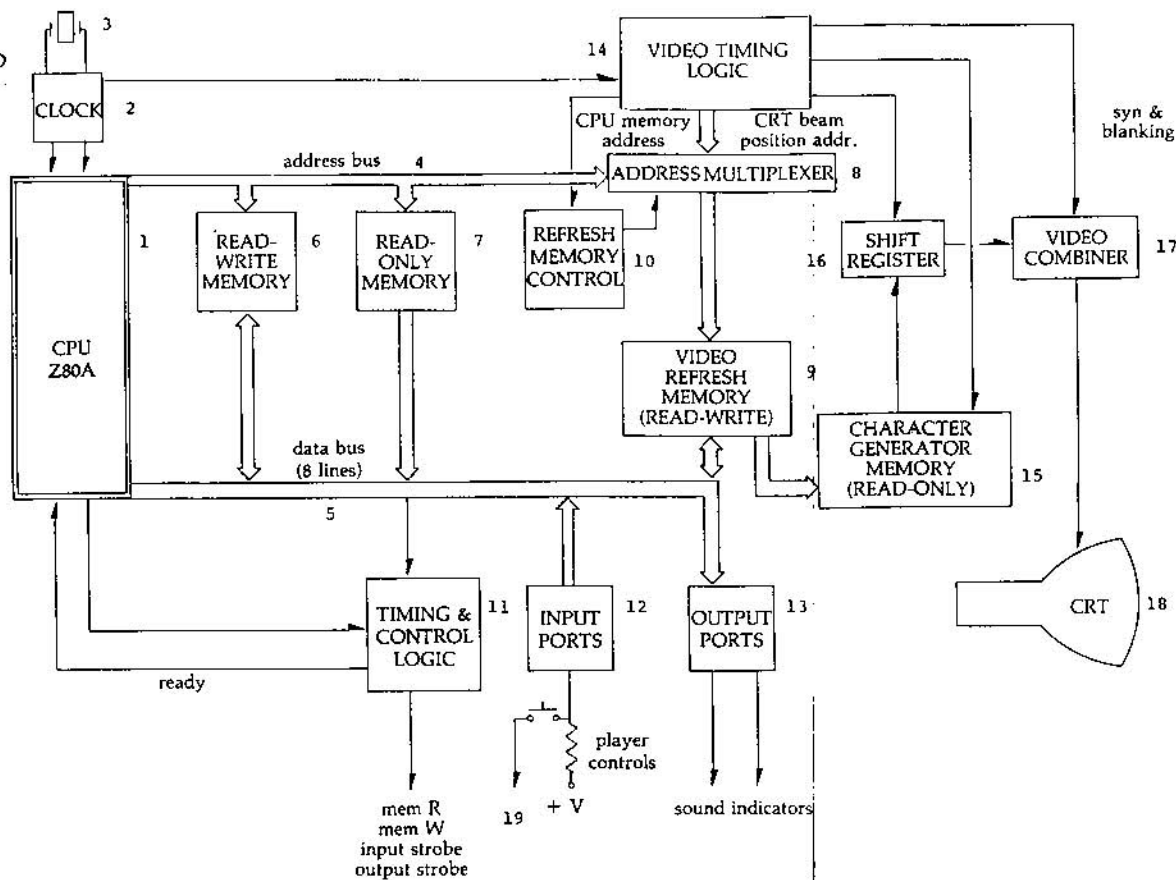
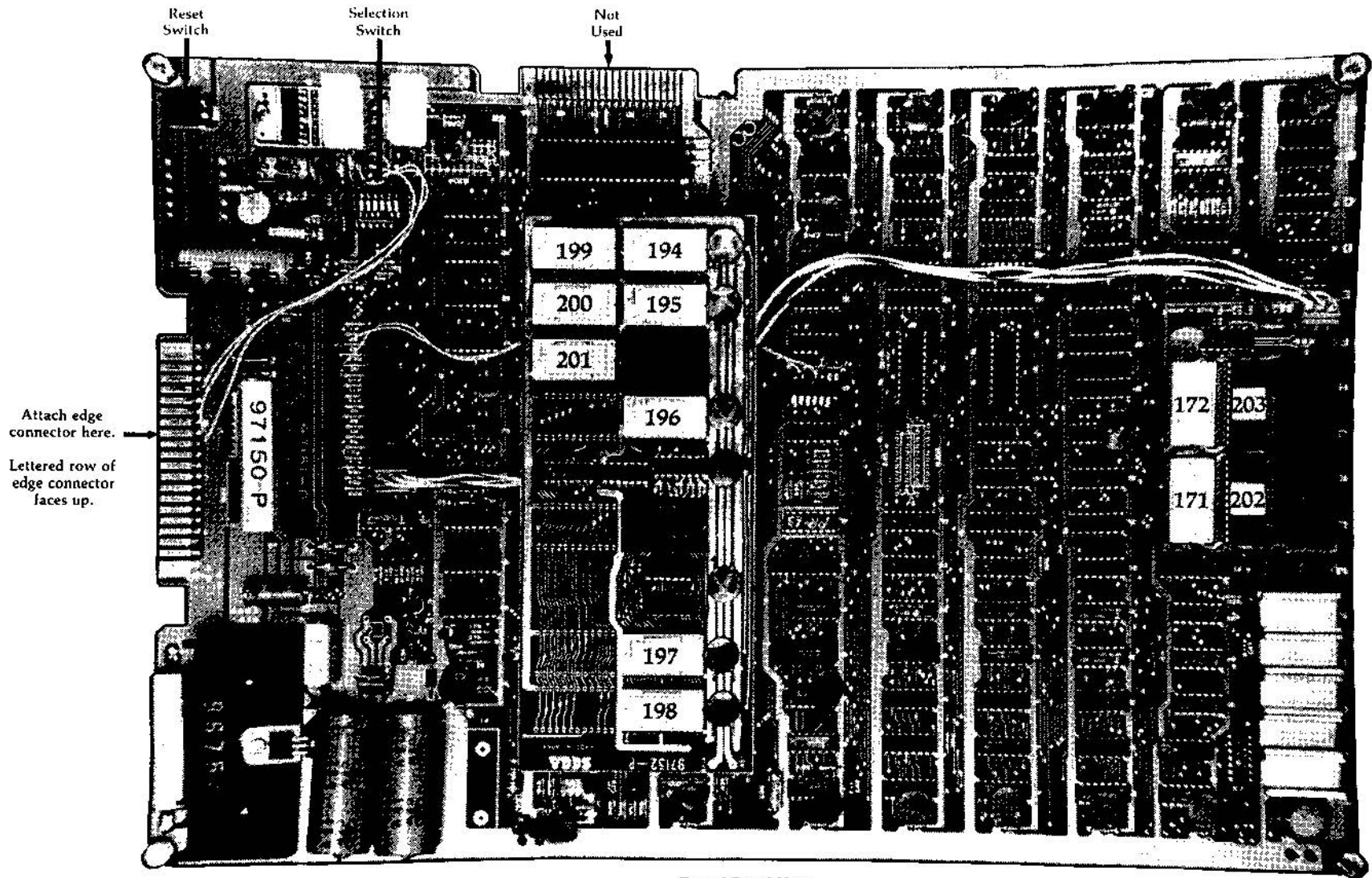


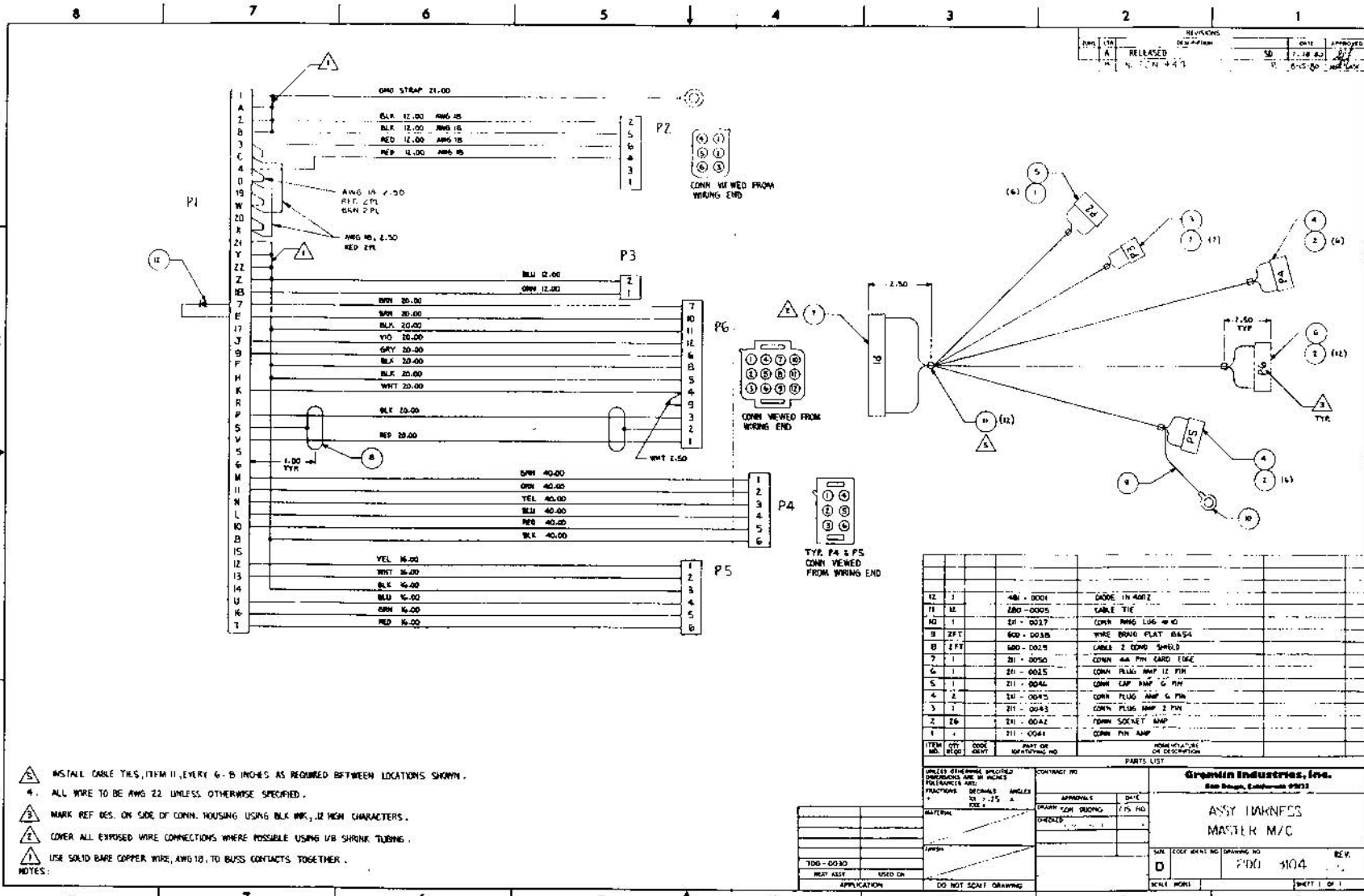
BLOCK DIAGRAM: Refer to schematic for parts that make up this diagram.

1. 7B
2. 1E, 1D, 3C
3. Crystal, 18.432 MHz
4. A0 through A15 on Z80 CPU; buffered by 7D, 7E, 8D
5. D0 through D7 on Z80 CPU; buffered by 8H, 8F
6. 2114: 3H, 3F, 7N, 7P
2101: 4F, 5F
93425: 1N, 1P, 1R, 1S, 1T
7. All Eprom
8. 6H, 6J, 4E, 5E, 2E, 3E, 2F
9. 8D
10. 8P
11. 8N, 8M, 9N, 5R, 4R, 5S, 4S, 5P
12. 9D, 9E, 9F, 9C
13. 9R, 8R, 8S, 8T, 9J, 9M, 6T, 7T, 7S, 9L
14. 1A, 1B, 2A, 2B, 2D, 6N, 6H, 6B, 6F, 3S, 3R, 5B
15. All Eprom
16. 2H, 2J, 2K, 2L, 1U, 3L
17. 6M, 6L
18. CRT (monitor)
19. Control Panel





Top of Board View



REV	DATE	BY	CHKD	APPROVED
1	7-18-83	SB		
2	8-15-83			

1. INSTALL CABLE TIES, ITEM 11, EVERY 6-8 INCHES AS REQUIRED BETWEEN LOCATIONS SHOWN.
 2. ALL WIRE TO BE AWG 22 UNLESS OTHERWISE SPECIFIED.
 3. MARK REF DES. ON SIDE OF CONN. HOUSING USING BLK INK, 12 HIGH CHARACTERS.
 4. COVER ALL EXPOSED WIRE CONNECTIONS WHERE POSSIBLE USING 1/8" SHRINK TUBING.
 5. USE SOLID BARE COPPER WIRE, AWG 10, TO BUSS CONTACTS TOGETHER.
- NOTES:

ITEM NO.	QTY REQD	CODE	REV	PART OR IDENTIFYING NO.	DESCRIPTION OR IDENTIFICATION
12	1	48		8001	CODE IN 4812
11	12	280		0005	CABLE TIE
10	1	21		0017	CONN PING LUG #10
9	2 PFT	600		0038	WIRE BRAG FLAT #8A4
8	2 PFT	600		0018	CABLE 2 COND SHIELD
7	1	21		0050	CONN 44 PIN CARD EDGE
6	1	21		0025	CONN PLUG AMP 12 PIN
5	1	21		0046	CONN CAP AMP 6 PIN
4	2	21		0045	CONN PLUG AMP 6 PIN
3	2	21		0043	CONN PLUG AMP 2 PIN
2	26	21		0042	CONN SOCKET AMP
1	1	21		0041	CONN PIN AMP

UNLESS OTHERWISE SPECIFIED DIMENSIONS ARE IN INCHES FRACTIONS DECIMALS ANGLES
 N = 1/32" A = 45°

CONTRACT NO. _____
 APPROVALS: _____ DATE _____
 DRAWN: _____ CHECKED: _____
 PARTS LIST: _____
 TITLE: _____
 SHEET NO. _____ OF _____
 DATE: _____

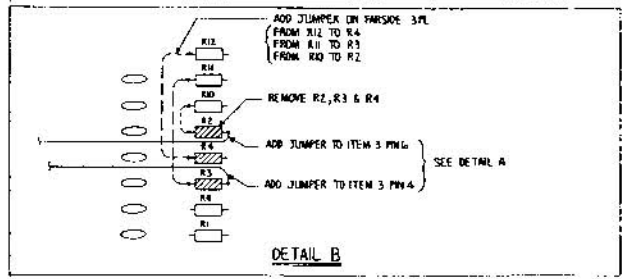
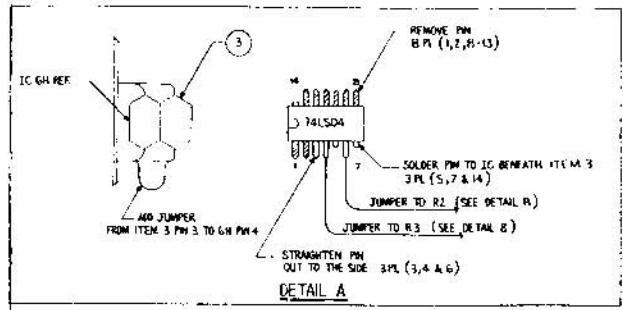
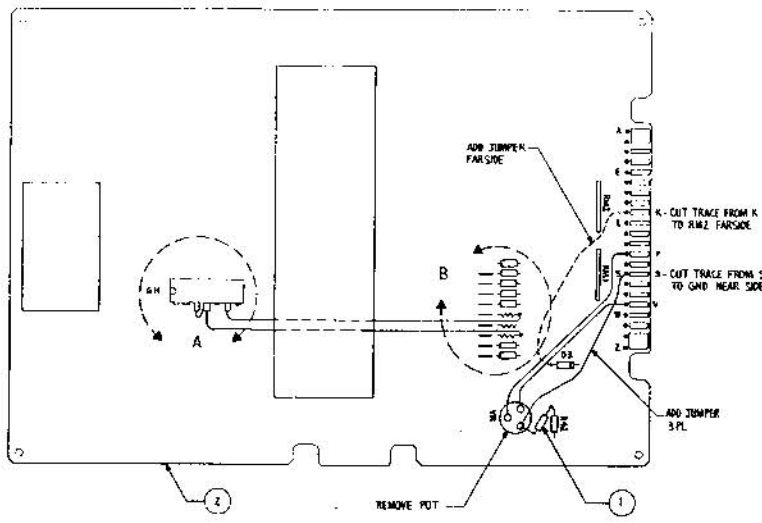
Gardwin Industries, Inc.
 8000 Douglas, Columbus OH 43223
ASSY HARNESS MASTER M/C

SIZE: _____ CODE: _____ DRAWING NO: 7900 3104 REV. _____
 SCALE: _____ SHEET 1 OF 1

8000-3104

B 7 6 5 4 3 2 1

REVISED		REVISIONS	DATE	APPROVED
ROW	LEN	DESCRIPTION		
A		REVISED	SD	17 88



1. ALL JUMPER WIRE TO BE AWG 26 .
NOTES:

ITEM NO.	QTY	CODE	SYMBOL	DESCRIPTION	QUANTITY	REVISIONS
3	1		314 - 0016	IC 74LS04		
2	1		834 - 0026	ASSY GAME 11LC. M/C		
1	1		470 - 002	RESISTOR 1K, 1/4 W, 5%		

PARTS LIST		CONTRACT NO.		APPROVALS		DATE	
QUANTITY	DESCRIPTION	APPROVED	DATE	APPROVED	DATE	DRAWING NO.	
						3000 - 310	
MATERIAL				SCALE NONE		SHEET 4 OF 1	

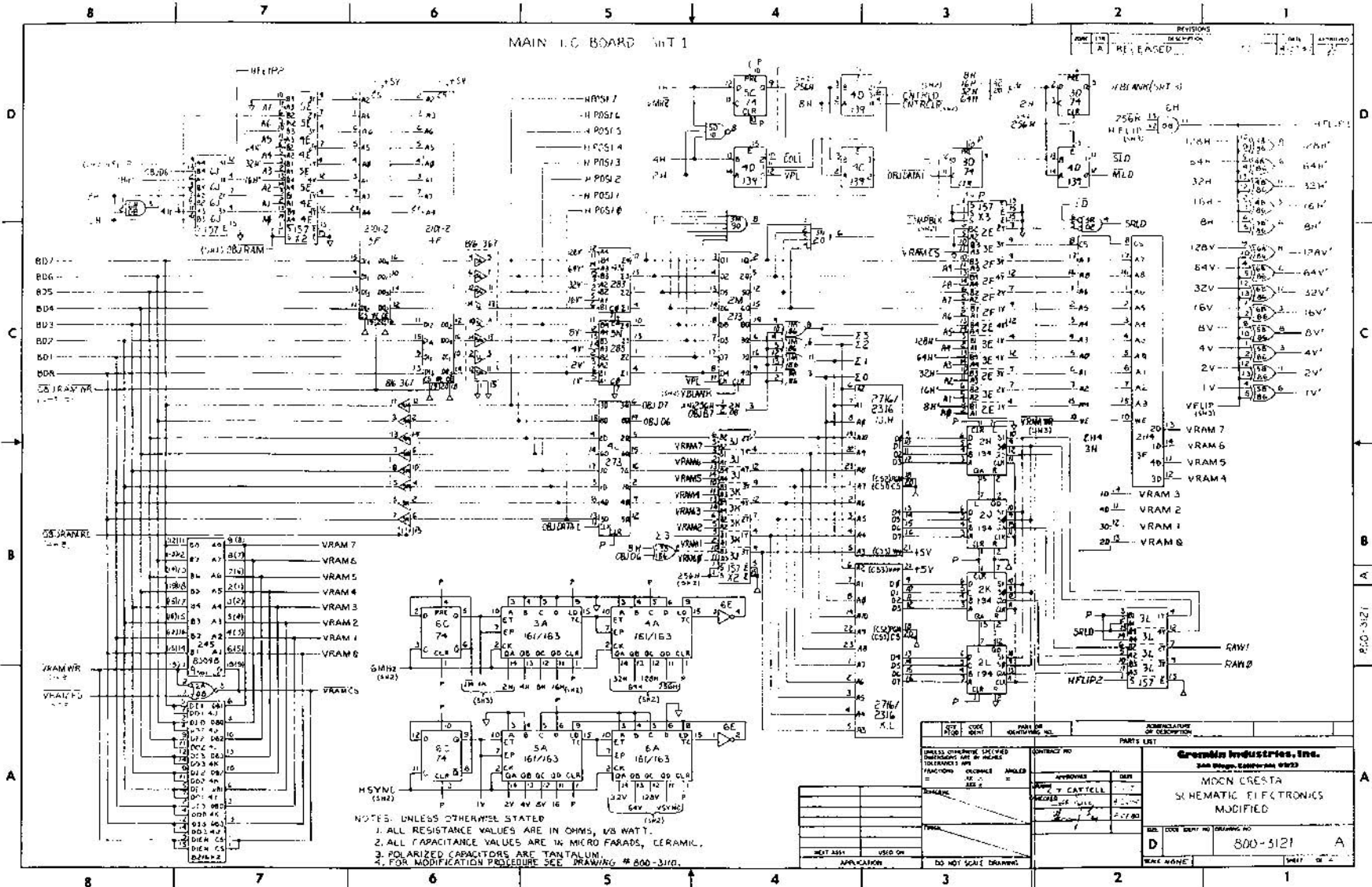
Granlin Industries, Inc.
San Diego, California 92108
ASSY GAME ELECTRONICS
M/C MODIFIED

800-310

8 7 6 5 4 3 2 1

MAIN I.C. BOARD INT 1

REVISIONS
 DATE: 1/17/68
 BY: A
 DESCRIPTION: RELEASED
 DATE: 4/2/68
 BY: A

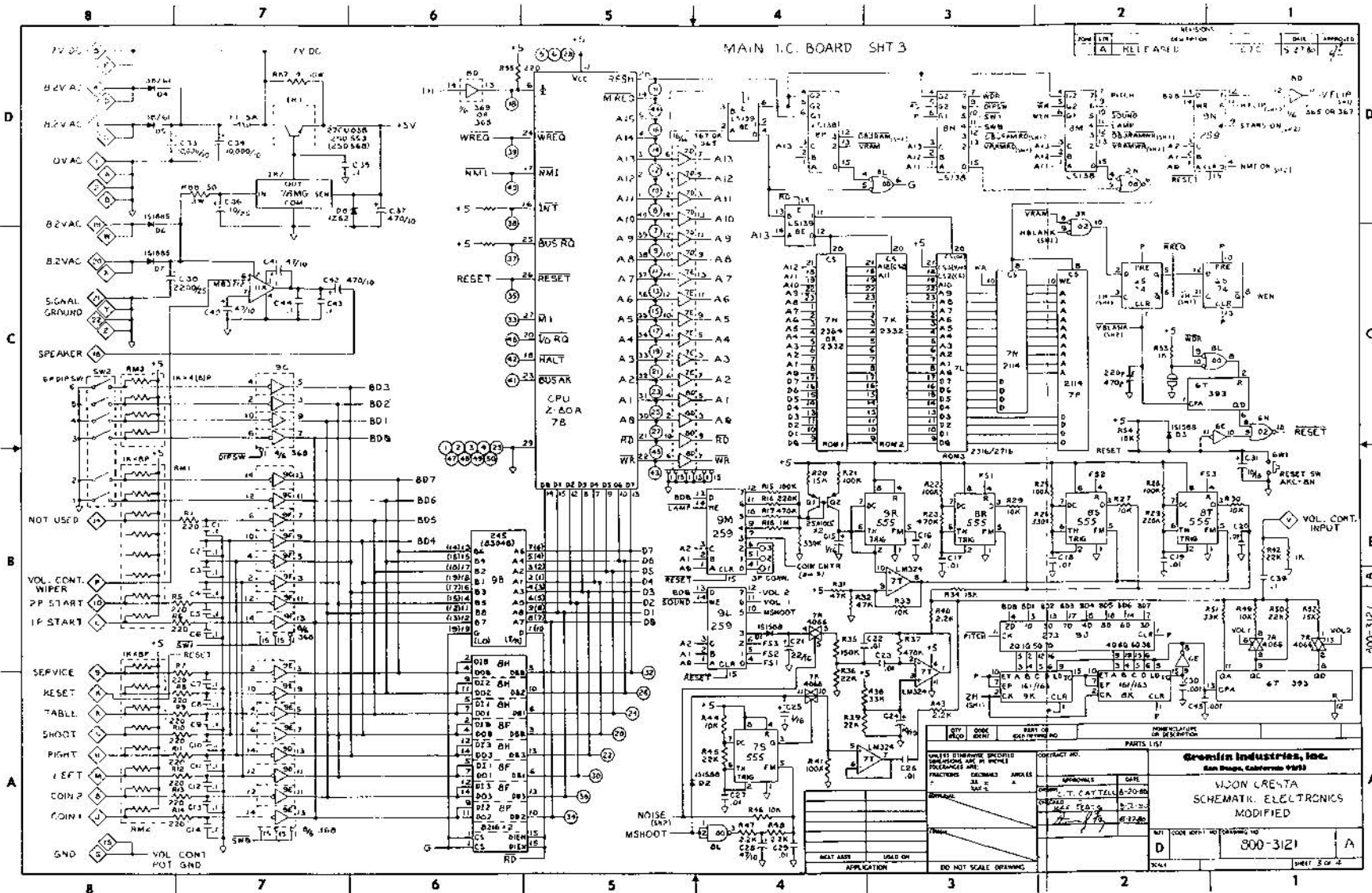


- NOTES: UNLESS OTHERWISE STATED
 1. ALL RESISTANCE VALUES ARE IN OHMS, US WATT.
 2. ALL CAPACITANCE VALUES ARE IN MICRO FARADS, CERAMIC.
 3. POLARIZED CAPACITORS ARE TANTALUM.
 4. FOR MODIFICATION PROCEDURE SEE DRAWING # 800-310.

REV	DATE	BY	DESCRIPTION
1	1/17/68	A	RELEASED

PARTS LIST		APPROVALS		DESCRIPTION	
Q1	IC	DATE	BY	REV	DESCRIPTION
Green Industries, Inc. 2448 Douglas Street - Dallas, Texas 75223 MOON CRESTA SCHEMATIC ELECTRONICS MODIFIED					
REV	DATE	BY	NO	DRAWING NO	
D				800-5121	A
DRAWN BY: [Signature]				CHECKED BY: [Signature]	
DATE: 1/17/68				SCALE: 1:1	

MAIN I.C. BOARD SHT 3



Green Industries, Inc.
San Diego, California 92108

VISION CREATA
SCHEMATIC ELECTRONICS
MODIFIED

DATE: 8-20-80
DRAWN BY: T. CAYTEL
CHECKED BY: [Signature]
APPROVED BY: [Signature]

REV: 1
REV: 2
REV: 3
REV: 4

800-3121

Sheet 3 of 4

