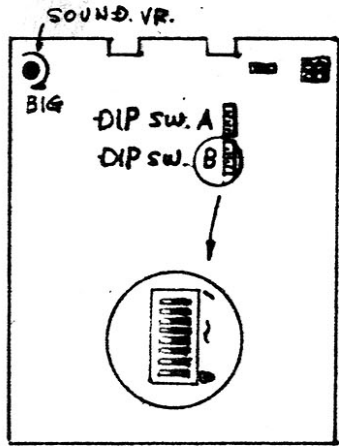
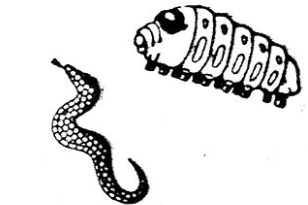


PARTS SIDE.

GND	1	GND
JP (+)	2	JP (-)
	3	COIN COUNTER(1)
1P START LAMP	4	2P START LAMP
+12V	5	+12V
+5V	6	+5V
GND	7	GND
SERVICE	8	TEST SW.
COIN(1)	9	COIN(2)
1P START	10	2P START
1P SWORD	11	2P SWORD
1P LEFT	12	2P LEFT
1P DOWN	13	2P DOWN
1P RIGHT	14	2P RIGHT
1P UP	15	2P UP
	16	
	17	
	18	
1P FIRE	19	2P FIRE
	20	
COIN COUNTER(2)	21	TABLE TO GND
GND	22	GND



1	TV. RED
2	TV. GREEN
3	TV. BLUE
4	TV. SYNC
5	TV. GND
6	

1	+12V	(1A)
2	GND	
3	+5V	(3A)



		1	2	3	4	5	6	7	8
TEST	NORMAL	OFF							
	TEST	ON							
COIN(1)	1 COIN / CREDIT	OFF	OFF						
	1 COIN 2 CREDIT	OFF	ON						
	2 COIN / CREDIT	ON	OFF						
	3 COIN / CREDIT	ON	ON						
ATTRACT SOUND	SOUND				OFF				
	QUIET				ON				
PATTERN SKIP	NORMAL					OFF			
	SKIP					ON			
SCREEN STOP	NORMAL						OFF		
	STOP						ON		
COIN(2)	1 COIN / CREDIT							OFF	OFF
	1 COIN 2 CREDIT							OFF	ON
	2 COIN / CREDIT							ON	OFF
	3 COIN / CREDIT							ON	ON

DIP SW B - ALL OFF (ALWAYS)

CN-123



FLIPPERSPILL.COM